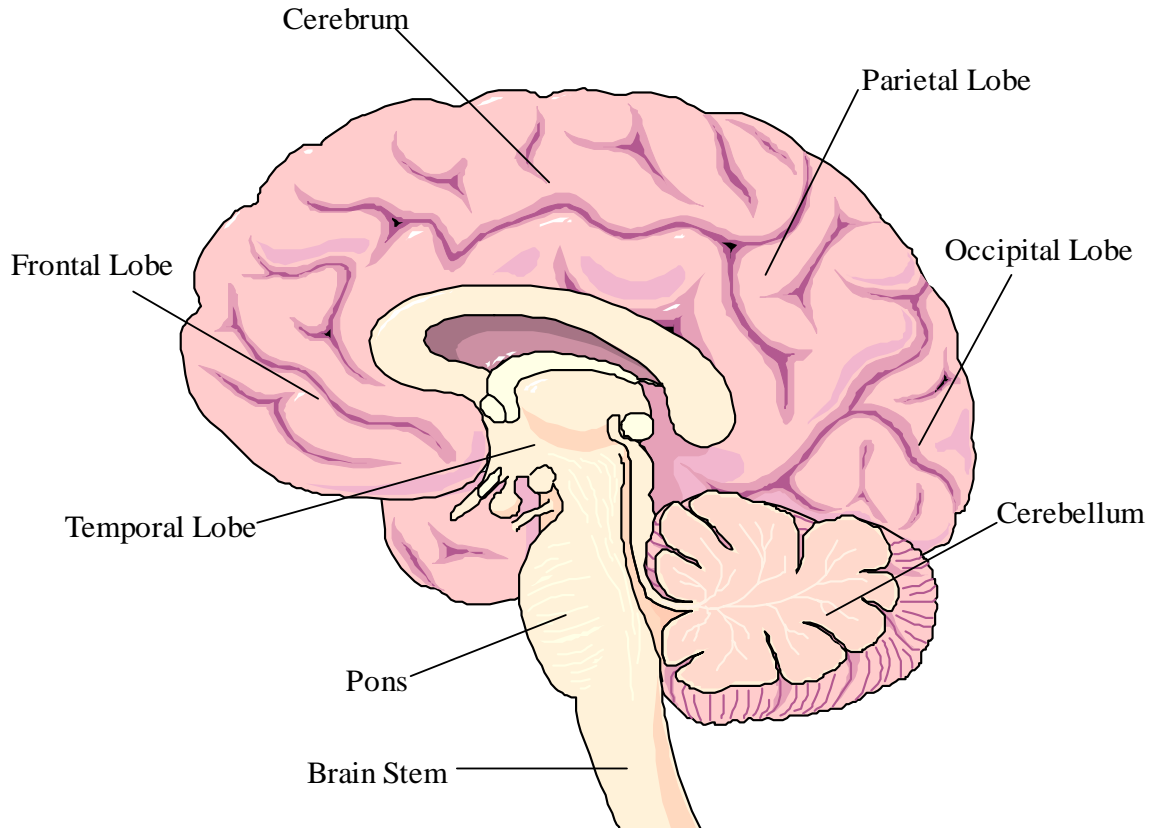


## Model Of The Human Brain



The human brain is one of the most complex objects in the world. It holds our memories, tells our muscles to move, keeps our heart beating, allows us to communicate, and enables us to feel emotions. Here is a list of what the different parts of the brain do:

**CEREBRUM:** Stores memories and controls responsiveness to different sensory signals.

**CEREBELLUM:** Coordinates all of your movement and muscles.

**FRONTAL LOBE:** Controls human's ability to use words and speech as well as emotions.

**PARIETAL LOBE:** Controls human's sense of touch.

**OCCIPITAL LOBE:** Controls human's sense of vision.

**TEMPORAL LOBE:** Controls the sense of hearing.

**PONS:** Controls human's breathing and their heartbeat.

**BRAIN STEM:** Sends all messages from the brain to the different parts of the body.

Form 4009D

© 2005 Nationwide Publishing Company, Inc.

<http://www.claimspages.com>